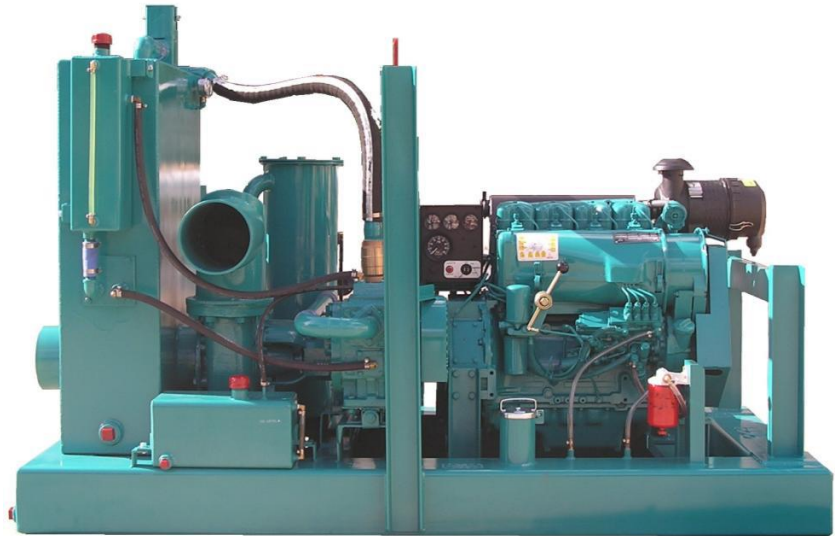


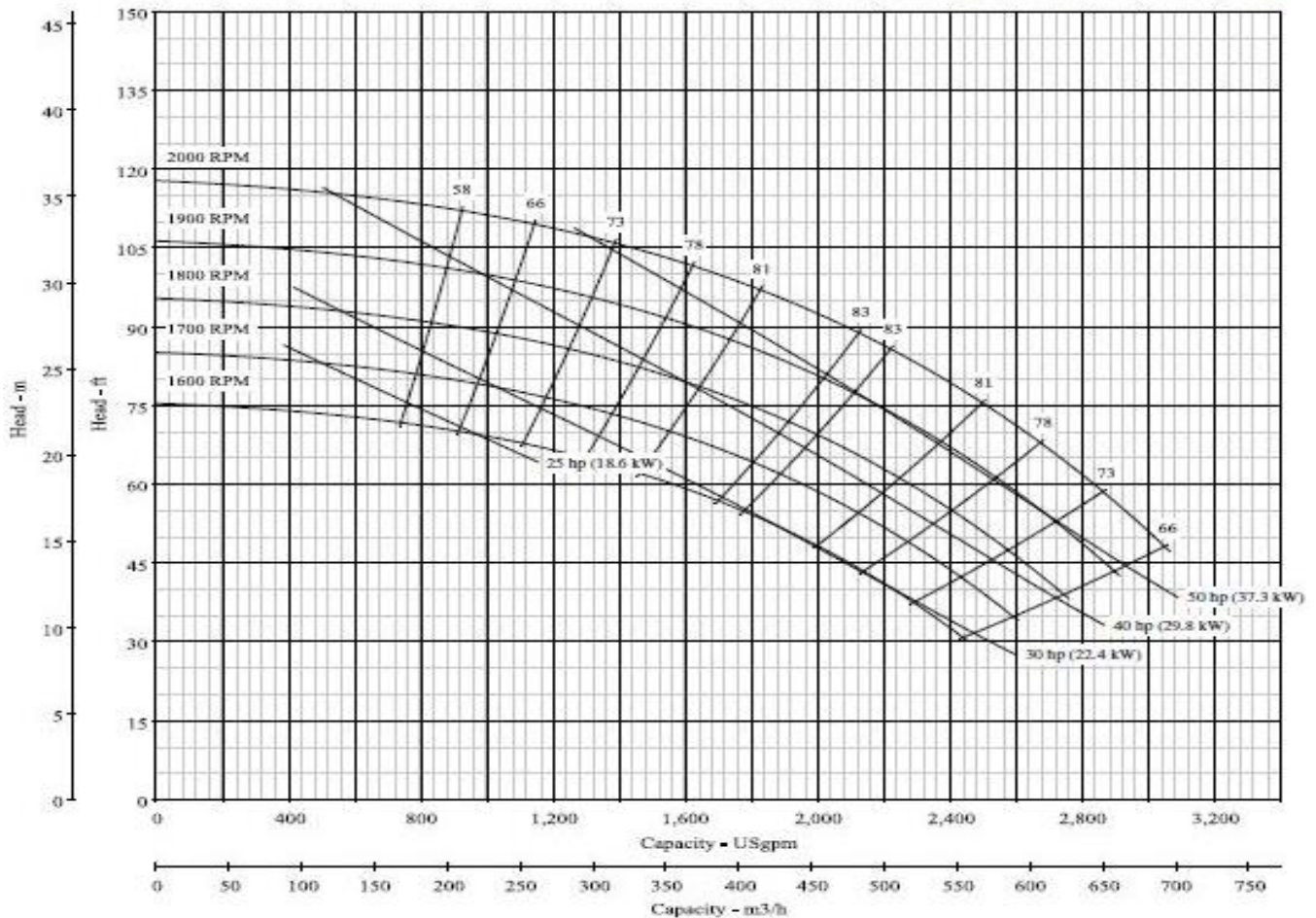
Wellpoint Pump 8 inch discharge

The Complete AutoPrime™ Wellpoint Pump has been the industry standard for wellpoint and sock underdrain dewatering since 1923. Our VAWP series integrates our unique vacuum system with high performance centrifugal pumps for maximum performance in air handling and water volume. The rotary vane vacuum system used in our wellpoint pumps is independent of the centrifugal pump, with no cross contamination to wear on vacuum pump tolerances.



Full Dia. 9.63"

Nominal RPM: **VARIOUS**
Based on Fresh Water @ 68° F (20° C)
Maximum Working Pressure: 175 PSI (12 BAR)



“The finest dewatering pumps and wellpoint equipment since 1923”

Complete Dewatering 8VAWP-Dz4C10-F(W) 8" Vacuum Assisted Wellpoint Pump

SPECIFICATIONS

(All specifications subject to change without notice)

Pump Component

Make: Complete Dewatering
 Model: Berkeley B-series, end suction centrifugal, long coupled
 Casing: High efficiency double, Cast Iron
 Impeller: Semi-open 9.63", Cast Iron
 Seal: Carbon-ceramic / buna-n
 Seal lubrication: Water cooled & lubricated
 Coupling: Long coupled, doughnut type elastomeric element
 Suction, Discharge: 8" x 8" nominal straight pipe, cam-lock or Bauer fittings optional

Performance:

Pumping Capacity: to 2700 gpm (10233 l/m)
 Head Capacity: to 95' (29.0 m)
 Suction Lift: to 24' (7.3 m)
 Solids Capacity: to 1-1/8" spherical (2.85 cm)

Diesel Engine

Make / Model: Deutz D914L04
 John Deere/Perkins/Hatz/Kohler also available
 Type: 4 cylinder air cooled diesel, naturally aspirated
 Horsepower: 59 hp continuous at 1800 rpm
 Control Panel: Murphy control panel with engine temp, oil pressure, voltage, tachometer, hour meter gauges; safety shutdowns on critical engine conditions.
 Fuel Filters: Dual fuel filter system with fuel/water separator

Vacuum System

Vacuum Pump: Complete C10W-OF rotary vane, water cooled, oil lubricated
 Air Handling: 200 cfm
 (alternate; dual C5 vacuum pumps 260 cfm)
 Lubrication: Single point oiler w/ closed loop vacuum pump oil recovery system
 Cooling: Liquid and oil cooled; vacuum pump is water cooled, vacuum oil is also cooled via a closed loop oil recovery system w/ heat exchanger
 Oil capacity: 48 quarts, 15/40 wt.
 Vacuum system: Suction priming constant vacuum system with a large steel air/water separation tank, stainless steel peeler valve float mechanism, manifold trap moisture capture system, vacuum oil recovery tank w/ stainless steel vacuum oil demist element.

Frame

Type: Integral fuel cell / frame, welded steel construction
 Material: 8" x 1/4" steel box tube, welded and pressure tested
 Fuel Capacity: 62 gallons (235 liters); approx. 18-24 hours run time between refueling. Can also be used with an auxiliary fuel tank.
 Clean out ports: (4), one on each corner
 Fuel filler: 4" filler neck with lockable cap, sediment screen
 Battery hold-down: External, lockable bar
 Lifting bale: Single point, balanced
 Paint: All components are cleaned, then primed with an epoxy primer. Components are then painted with an industrial grade enamel. Custom colors are available.

Wheel Mount Option

Axle: Single axle, 6000# rated Torflex torsion axle.
 Tires: 225/75/R15, Highway rated, load range D
 Fenders: Steel diamond plate
 Tow Hitch: To match your towing vehicle (ball, pintel, lunette eye) with safety chains
 Leveling: Drop down posts on all corners of the pump, front wind-down jack stand
 Brakes (optional): Hydraulic surge or electric with battery backup and charger

Dimensions

Frame Mount: Length 8' (98", 250 cm)
 Width 4' (50", 127 cm)
 Height 6' (70", 178 cm)
 Weight 3600 lbs. (1640 kg)
 Wheel Mount: Length 12.5' (150", 380 cm)
 Width 7.5' (90", 230 cm)
 Height 6.8' (82", 208 cm)
 Weight 4200 lbs. (1910 kg)

Options

Increased fuel capacity
 Vacuum pump upgrade
 "Whisper Pack" full or partial enclosures

Warranty

CDPW Inc. warranties the entire unit for one year parts and labor against defects in product or workmanship. Engine warranties are carried by the manufacturer, and may exceed one year.